

Note Duration

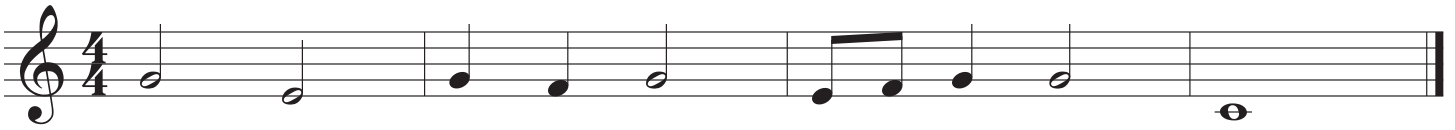
eighth note (♪) = 1/2 beat

quarter note (♩) = 1 beat

half note (♮) = 2 beats

whole note (♩) = 4 beats

1. Label each note with its durational name (whole note, half note, etc.)



2. Write the number of beats below each note



3. Each measure in the next exercise is missing a beat or more. Complete each measure by adding notes with the appropriate amount of beats.

