

Name _____

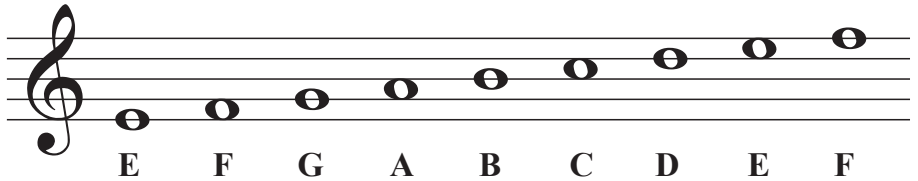
Date _____

Notes on the G Clef

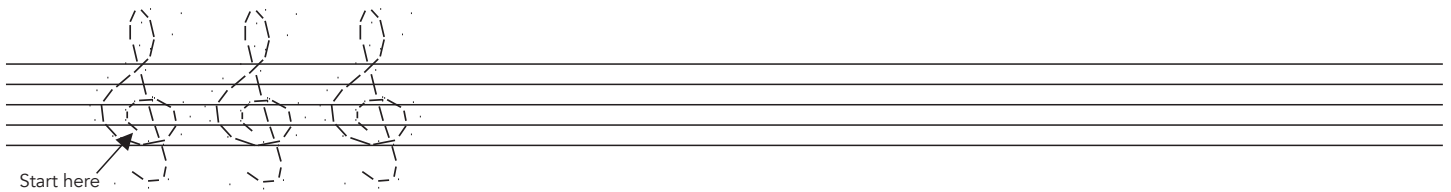
A **clef** appears at the beginning of each staff. The clef shown is a **treble clef**, also known as the **G clef**.



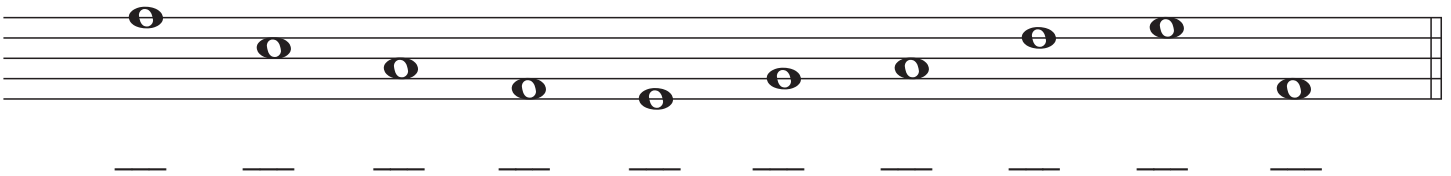
Each note on the treble clef staff has a letter name. Only A to G are used.



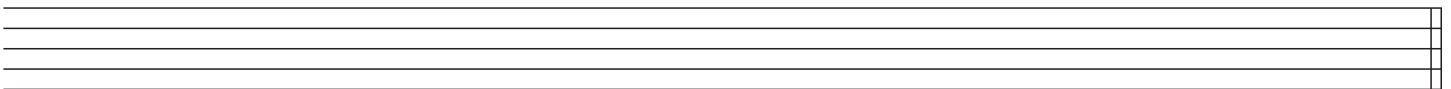
1. Practice drawing the treble clef symbol by tracing over the guidelines. Draw more clefs in the remaining space.



2. Draw a treble clef at the beginning of the staff and write the letter name of each note.

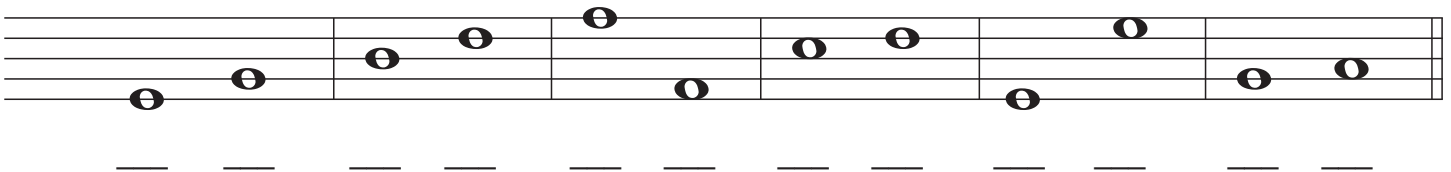


3. Write the notes as indicated by the letters below. Don't forget to place a treble clef at the beginning of the staff.



A C E F D B A F D G

4. Draw a treble clef on the staff, write the letter name for each note, and circle the higher note in each pair.



5. Draw a treble clef on the staff, label each note with its letter name and, finally, circle the lower note in each pair.

